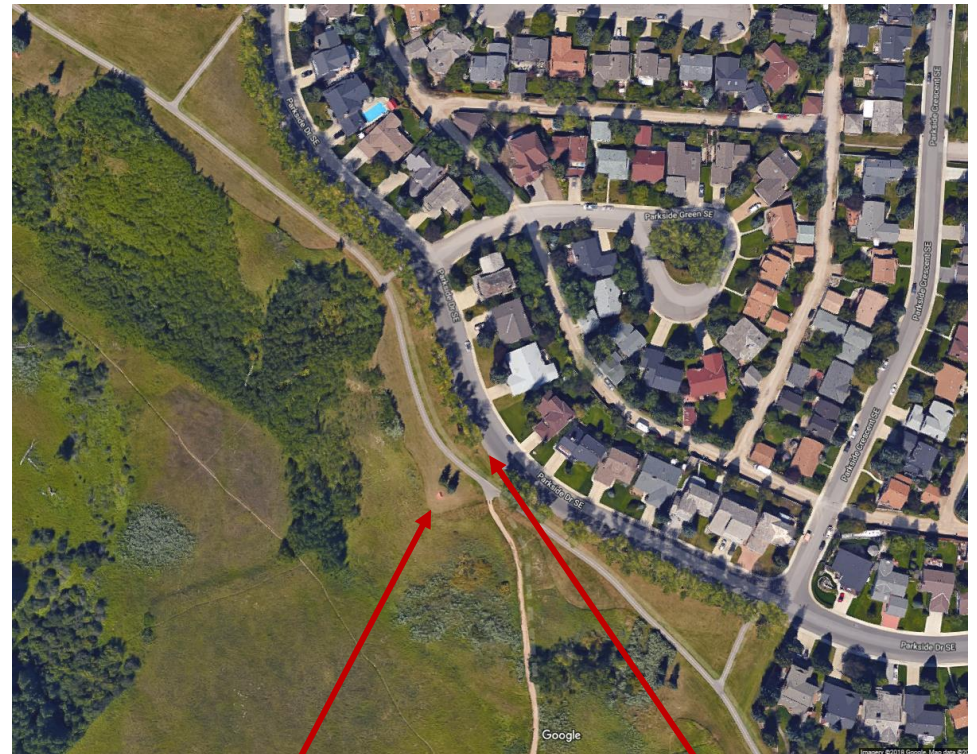
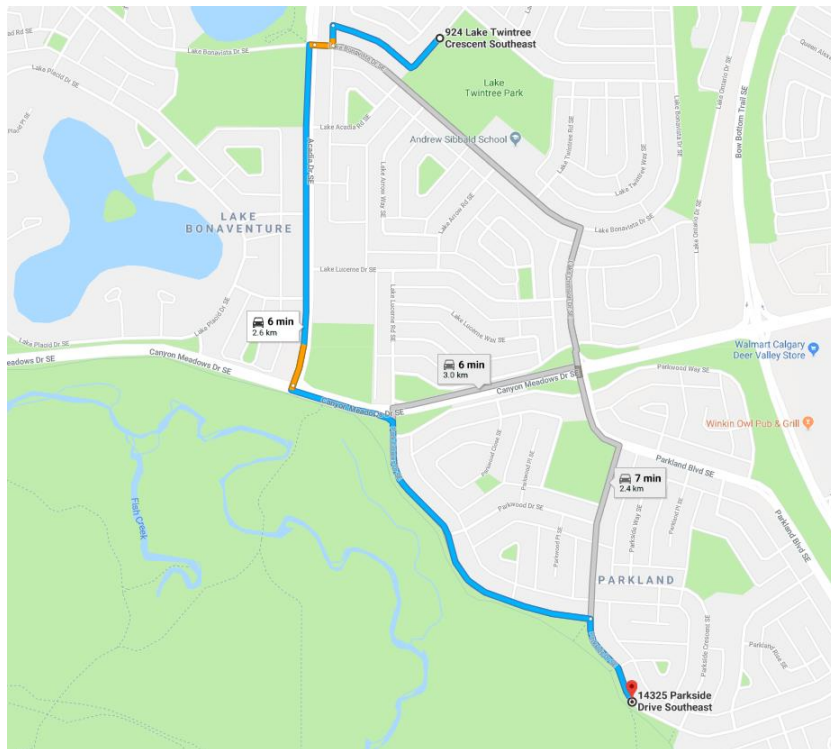


Close Up of the Start / Meeting Point – Meet here at 6:25pm for a prompt 6:30 start

Meet next to road on Parkside Drive just after Parkside Green (Cul de sac)



Easy to find

6min drive from Scout Hall

Meet here, away from road,
on other side of cycle path

Park bench marks
rendezvous point

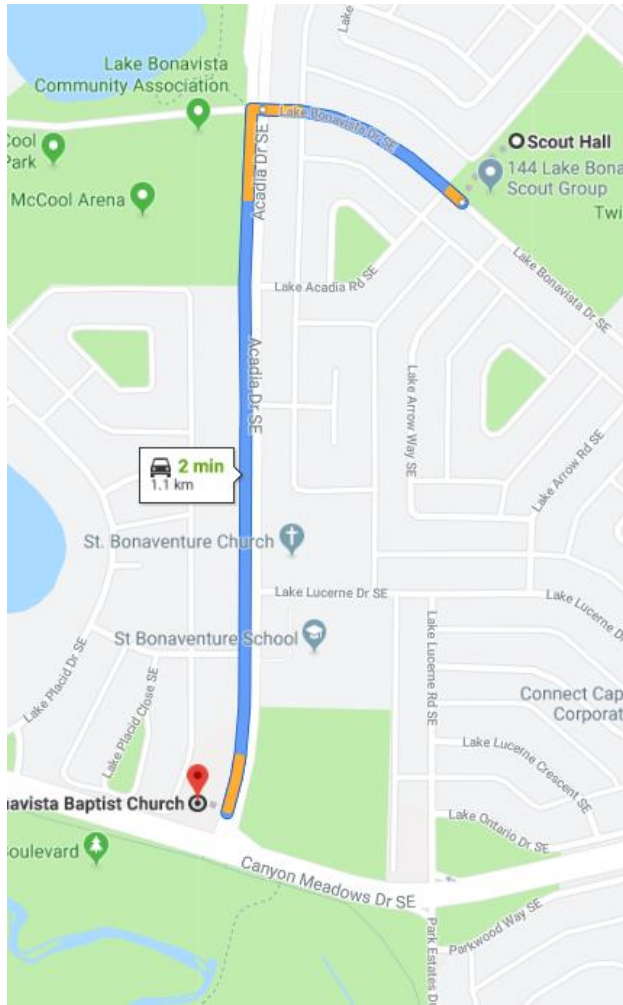
Parents can park along the road
whilst dropping off. There are no
parking restrictions.

Room for more than 10 cars parked
nose to tail.

Cubs do not need to cross road

Close Up of Pick up Point – Collect cubs here at 8pm.

Meet in Bonavista Baptist Church parking lot (marked below on map as Tot Spot)



Parents can park in the parking lot

Note there is only access to the parking lot from the southbound side of Acadia.

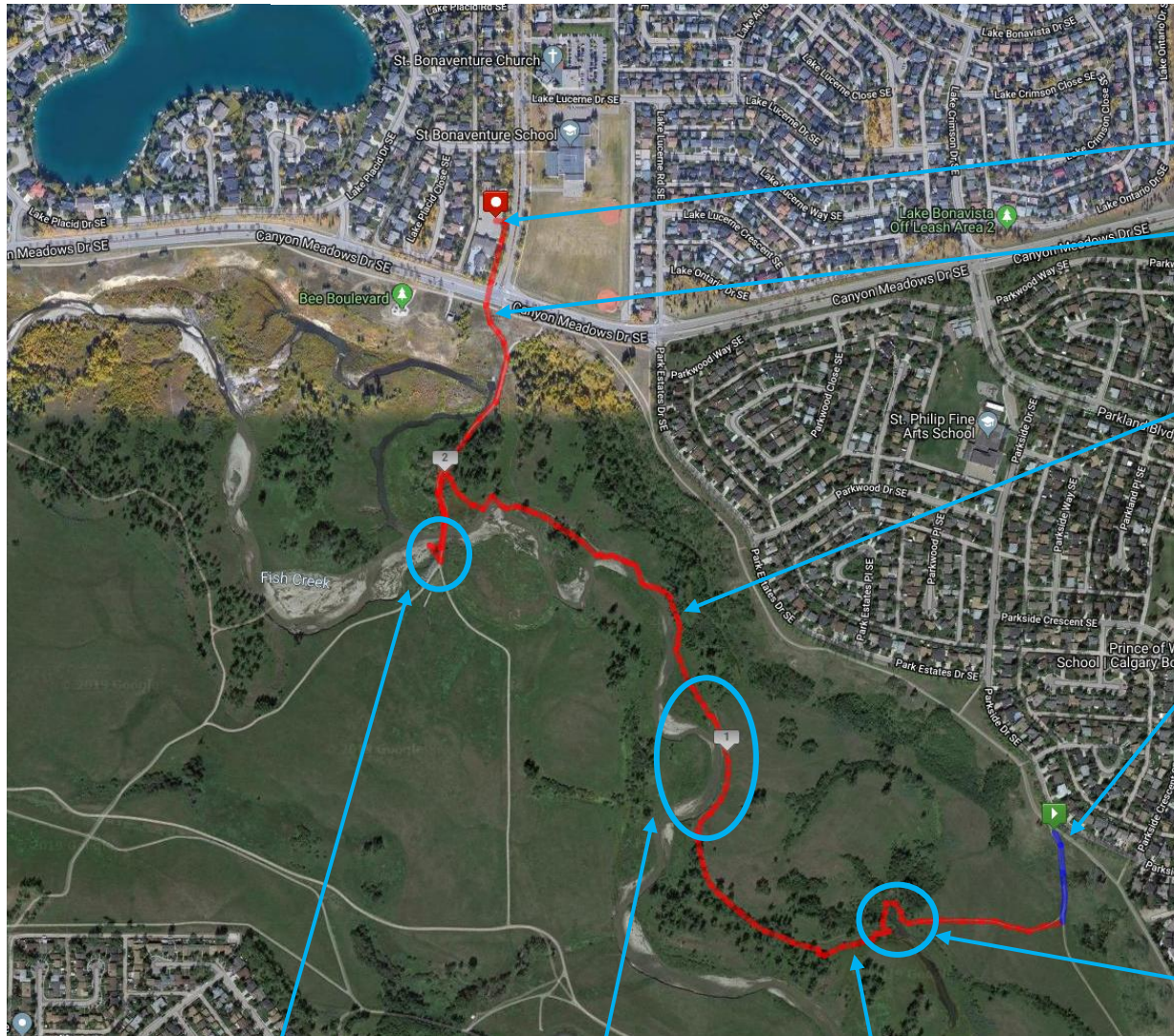
But it's easy enough to u-turn at the next street north (Lk Placid Hill SE)

Room for more than 10 cars parked

**Finish & Pick
up Point**

2.4km
Should take ~ 1.0hr

**Start & Drop
off Point**



**ERP 2 – Canyon Meadows Drive & Acadia
Half way emergency Rendezvous Point
(can muster and coord evac from
church parking lot across the road)**

Road crossing – all together, use the
lights

River speed and volume
- How fast is the river?
- How full is the creek?
- If the beavers have left us any, let's
find some "Pooh sticks" and estimate

**ERP 1 – Parkside Drive & Parkside Green
Starting point Rendezvous Point
(muster at road level on grass away
from road/path, also plenty of parking)**

New Bridge

- Discuss how it's made and why
it was replaced after last flood
- hang out on the pebble beach

Natural Erosion by River

- Bank is falling in, so path is
moving
- Is this good, bad or just nature?
- should humans intervene?

The Old Tree Bridge

- How hard did the beavers
work to fell this massive tree
- Shall we make use of it as a
cool new bridge over the pond?

Fantastic Beaver Lodge and Dam

- Active – good chance of seeing Beavers
- Great example of pond, dam and lodge
- Discuss "damage" caused by Beaver
(many trees have been felled and large
area flooded)